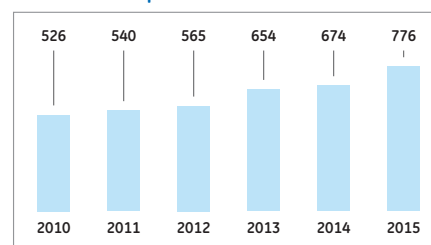




Prominent 2015 DeltaVision™ Elite publications

In 2015, DeltaVision Elite fluorescence microscope had its best year ever being cited in 776 peer-reviewed papers. Notably, this does not include the 115 published papers citing the DeltaVision OMX super resolution microscope from the same year. There were 10 citations in *Nature*, 2 in *Cell*, 12 in *Nature Cell Biology*, 11 in *Molecular Cell*, 39 in *Nature Communications*, and 20 in *The Journal of Cell Biology*. Here, a selection of prominent papers featuring the DeltaVision Elite are listed according to application.

DeltaVision publications



Bacterial biology

Notti, R. *et al.* A common assembly module in injectisome and flagellar type III secretion sorting platforms. *Nat Commun* **6(7125)**, 1-11 (2015), doi:10.1038/ncomms8125.

Wu, I. *et al.* A versatile nano display platform from bacterial spore coat proteins. *Nat Commun* **6(6777)**, 1-8 (2015), doi:10.1038/ncomms7777.

Liu, J. *et al.* Metabolic co-dependence gives rise to collective oscillations within biofilms. *Nature* **523**, 550-554 (2015), doi:10.1038/nature14660.

Strahl, H. *et al.* Transmembrane protein sorting driven by membrane curvature. *Nat Commun* **6(8728)**, 1-9 (2015), doi:10.1038/ncomms9728.

Prindle, A. *et al.* Ion channels enable electrical communication in bacterial communities. *Nature* **527**, 59-63 (2015), doi:10.1038/nature15709.

Pande, S. *et al.* Metabolic cross-feeding via intercellular nanotubes among bacteria. *Nat Commun* **6(6238)**, 1-13 (2015), doi:10.1038/ncomms7238.

Tanouchi, Y. *et al.* A noisy linear map underlies oscillations in cell size and gene expression in bacteria. *Nature* **523**, 357-360 (2015), doi:10.1038/nature14562.

Cancer Biology

Jang, M. *et al.* Design of a platform technology for systemic delivery of siRNA to tumors using rolling circle transcription. *Nat Commun* **6(7930)**, 1-12 (2015), doi:10.1038/ncomms8930.

Miller, M. *et al.* Tumor-associated macrophages act as a slow-release reservoir of nano-therapeutic Pt(IV) pro-drug. *Nat Commun* **6(8692)**, 1-13 (2015), doi:10.1038/ncomms9692.

Cell fate specification

Takahashi, C. *et al.* *mab21-13* regulates cell fate specification of multiciliate cells and ionocytes. *Nat Commun* **6(6017)**, 1-13 (2015), doi:10.1038/ncomms7017.

Cell fusion, growth, and proliferation

Cianfanelli, V. *et al.* AMBRA1 links autophagy to cell proliferation and tumorigenesis by promoting c-Myc dephosphorylation and degradation. *Nat Cell Biol* **17**, 20-30 (2015), doi:10.1038/ncb3072.

Lunt, S. *et al.* Pyruvate kinase isoform expression alters nucleotide synthesis to impact cell proliferation. *Mol Cell* **57**, 95-107 (2015), doi:10.1016/j.molcel.2014.10.027.

Abenza, J. *et al.* Wall mechanics and exocytosis define the shape of growth domains in fission yeast. *Nat Commun* **6(8400)**, 1-13 (2015), doi:10.1038/ncomms9400.

Dudin, O. *et al.* A formin-nucleated actin aster concentrates cell wall hydrolases for cell fusion in fission yeast. *J Cell Biol* **208(7)**, 897-911 (2015), doi:10.1083/jcb.201411124.

Cell metabolism

Madsen, C. *et al.* Biotin starvation causes mitochondrial protein hyperacetylation and partial rescue by the SIRT3-like deacetylase Hst4p. *Nat Commun* **6(7726)**, 1-12 (2015), doi:10.1038/ncomms8726.

Kelkar, M. *et al.* PKA antagonizes CLASP-dependent microtubule stabilization to re-localize Pom1 and buffer cell size upon glucose limitation. *Nat Commun* **6(8445)**, 1-13 (2015), doi:10.1038/ncomms9445.

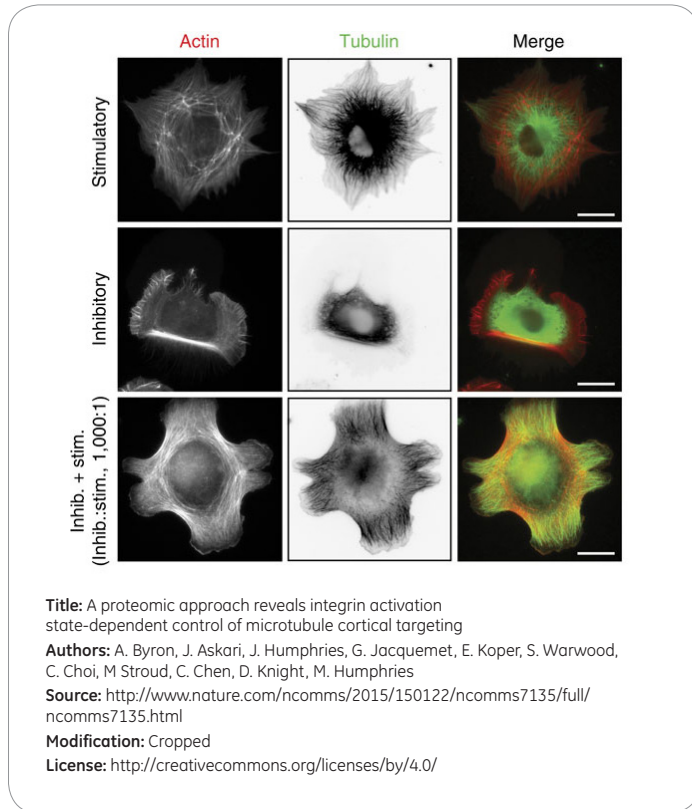
Doménech, E. *et al.* AMPK and PFKFB3 mediate glycolysis and survival in response to mitophagy during mitotic arrest. *Nat Cell Biol* **17**, 1304-1316 (2015), doi:10.1038/ncb3231.

Gopal, S. *et al.* Transmembrane proteoglycans control stretch-activated channels to set cytosolic calcium levels. *J Cell Biol* **210(7)**, 1199-1211 (2015), doi:10.1083/jcb.201501060.

Cell shape and cell migration

Atherton, P. *et al.* Vinculin controls talin engagement with the actomyosin machinery. *Nat Commun* **6(10038)**, 1-12 (2015), doi:10.1038/ncomms10038.

Byron, A. *et al.* A proteomic approach reveals integrin activation state-dependent control of microtubule cortical targeting. *Nat Commun* **6(6135)**, 1-14 (2015), doi: 10.1038/ncomms7135.



Cui, Y. *et al.* Cyclic stretching of soft substrates induces spreading and growth. *Nat Commun* **6(6333)**, 1-8 (2015), doi:10.1038/ncomms7333.

Howell, M. *et al.* WSp39 binds phosphorylated Coronin 1B to regulate Arp2/3 localization and Cofilin-dependent motility. *J Cell Biol* **208(7)**, 961-974 (2015), doi:10.1083/jcb.201410095.

Horton, E. *et al.* Definition of a consensus integrin adhesome and its dynamics during adhesion complex assembly and disassembly. *Nat Cell Biol* **17**, 1577-1587 (2015), doi:10.1038/ncb3257.

Priya, R. *et al.* Feedback regulation through myosin II confers robustness on RhoA signaling at E-cadherin junctions. *Nat Cell Biol* **17**, 1282-1293 (2015), doi:10.1038/ncb3239.

Schouteden, C. *et al.* The ciliary transition zone functions in cell adhesion but is dispensable for axoneme assembly in *C. elegans*. *J Cell Biol* **210(1)**, 35-44 (2015), doi:10.1083/jcb.201501013.

Stewart, R. *et al.* Nuclear-cytoskeletal linkages facilitate cross talk between the nucleus and intercellular adhesion. *J Cell Biol* **209(3)**, 403-418 (2015), doi:10.1083/jcb.201502024.

Schreiner, S. *et al.* The tethering of chromatin to the nuclear envelope supports nuclear mechanics. *Nat Commun* **6(7159)**, 1-13 (2015), doi:10.1038/ncomms8159.

Chromatin

Furusawa, T. *et al.* Chromatin decompaction by the nucleosomal binding protein HMGN5 impairs nuclear sturdiness. *Nat Commun* **6(6138)**, 1-10 (2015), doi: 10.1038/ncomms7138.

Chromosomes

Akera, T. *et al.* Mad1 promotes chromosome congression by anchoring a kinesin motor to the kinetochore. *Nat Cell Biol* **17**, 1124-1133 (2015), doi:10.1038/ncb3219.

Broderick, R. *et al.* TOPBP1 recruits TOP2A to ultra-fine anaphase bridges to aid in their resolution. *Nat Commun* **6(6572)**, 1-12 (2015), doi:10.1038/ncomms7572.

Iemura, K. *et al.* Chromokinesin Kid and kinetochore kinesin CENP-E differentially support chromosome congression without end-on attachment to microtubules. *Nat Commun* **6(6447)**, 1-11 (2015), doi:10.1038/ncomms7447.

Cilia

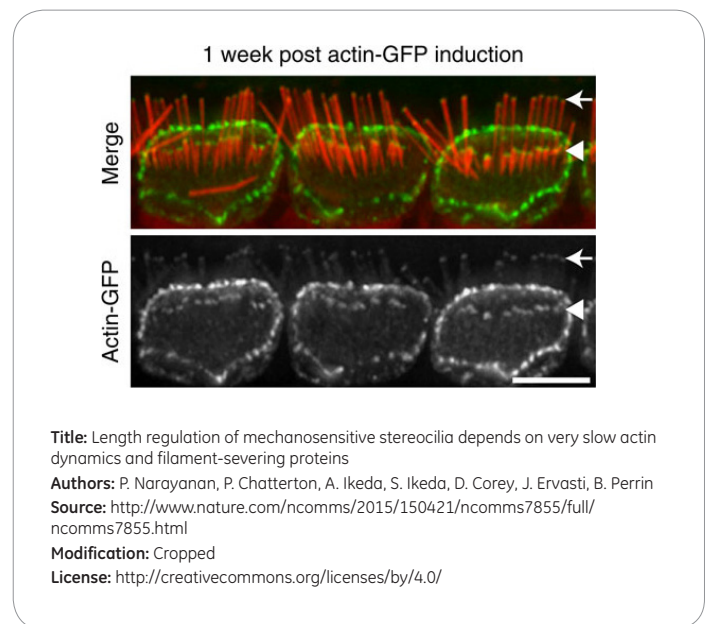
Bangs, F. *et al.* Lineage specificity of primary cilia in the mouse embryo. *Nat Cell Biol* **17**, 113-122 (2015), doi:10.1038/ncb3091.

Kim, J. *et al.* Actin remodeling factors control ciliogenesis by regulating YAP/TAZ activity and vesicle trafficking. *Nat Commun* **6(6781)**, 1-13 (2015), doi:10.1038/ncomms7781.

Kim, S. *et al.* Nek2 activation of Kif24 ensures cilium disassembly during the cell cycle. *Nat Commun* **6(8087)**, 1-13 (2015), doi:10.1038/ncomms9087.

Miyatake, K. *et al.* ERK7 regulates ciliogenesis by phosphorylating the actin regulator CapZIP in cooperation with Dishevelled. *Nat Commun* **6(6666)**, 1-12 (2015), doi:10.1038/ncomms7666.

Narayanan, P. *et al.* Length regulation of mechanosensitive stereocilia depends on very slow actin dynamics and filament-severing proteins. *Nat Commun* **6(6855)**, 1-8 (2015), doi:10.1038/ncomms7855.



Cytokinesis

Willet, A. *et al.* The F-BAR Cdc15 promotes contractile ring formation through the direct recruitment of the formin Cdc12. *J Cell Biol* **208(4)**, 391-399 (2015), doi:10.1083/jcb.201411097.

DNA damage and repair

Chung, D. *et al.* Perinuclear tethers license telomeric DSBs for a broad kinesin- and NPC-dependent DNA repair process. *Nat Commun* **6(7742)**, 1-13 (2015), doi:10.1038/ncomms8742.

Lotterberger, F. *et al.* 53BP1 and the LINC complex promote microtubule-dependent DSB mobility and DNA repair. *Cell* **163**, 880-893 (2015), doi:10.1016/j.cell.2015.09.057.

Pedersen, R. *et al.* TopBP1 is required at mitosis to reduce transmission of DNA damage to G1 daughter cells. *J Cell Biol* **210(4)**, 565-582 (2015), doi:10.1083/jcb.201502107.

DNA replication

Chen, Y. *et al.* ATR-mediated phosphorylation of FANCI regulates dormant origin firing in response to replication stress. *Mol Cell* **58**, 323-338 (2015), doi:10.1016/j.molcel.2015.02.031.

Lori, C. *et al.* Cyclic di-GMP acts as a cell cycle oscillator to drive chromosome replication. *Nature* **523**, 236-239 (2015), doi:10.1038/nature14473.

Endoplasmic reticulum

Murley, A. *et al.* Ltc1 is an ER-localized sterol transporter and a component of ER-mitochondria and ER-vacuole contacts. *J Cell Biol* **209(4)**, 539-548 (2015), doi:10.1083/jcb.201502033.

Shibuya, A. *et al.* The Erv41-Erv46 complex serves as a retrograde receptor to retrieve escaped ER proteins. *J Cell Biol* **208(2)**, 197-209 (2015), doi:10.1083/jcb.201408024.

Endosomes

Hao, Y. *et al.* USP7 acts as a molecular rheostat to promote WASH-dependent endosomal protein recycling and is mutated in a human neurodevelopmental disorder. *Mol Cell* **59**, 956-969 (2015), doi:10.1016/j.molcel.2015307033.

Henne, W. *et al.* Mdm1/Snx13 is a novel ER-endolysosomal interorganelle tethering protein. *J Cell Biol* **210(4)**, 541-551 (2015), doi:10.1083/jcb.201503088.

Kim, Y. *et al.* mTORC1 phosphorylates UVRAG to negatively regulate autophagosome and endosome maturation. *Mol Cell* **57**, 207-218 (2015), doi:10.1016/j.molcel.2014.11.013.

Wang, C. *et al.* A nanobuffer reporter library for fine-scale imaging and perturbation of endocytic organelles. *Nat Commun* **6(8524)**, 1-11 (2015), doi:10.1038/ncomms9524.

Functional nanoparticles

Hu, C. *et al.* Nanoparticle biointerfacing by platelet membrane cloaking. *Nature* **526**, 118-121 (2015), doi:10.1038/nature15373.

Gene expression

Guet, D. *et al.* Combining Spinach-tagged RNA and gene localization to image gene expression in live yeast. *Nat Commun* **6(8882)**, 1-10 (2015), doi:10.1038/ncomms9882.

Gutiérrez-Escribano, P. *et al.* A single cyclin-CDK complex is sufficient for both mitotic and meiotic progression in fission yeast. *Nat Commun* **6(6871)**, 1-13 (2015), doi:10.1038/ncomms7871.

Schneider, M. *et al.* The nuclear pore-associated TREX-2 complex employs Mediator to regulate gene expression. *Cell* **162**, 1016-1028 (2015), doi:10.1016/j.cell.2015.07.059.

Iacovella, M. *et al.* Rio1 promotes rDNA stability and downregulates RNA polymerase I to ensure rDNA segregation. *Nat Commun* **6(6643)**, 1-16 (2015), doi:10.1038/ncomms7643.

Genomic stability

Lambrus, B. *et al.* p53 protects against genome instability following centriole duplication failure. *J Cell Biol* **210(1)**, 63-77 (2015), doi:10.1083/jcb.201502089.

Human biology

D'Uva, G. *et al.* ERBB2 triggers mammalian heart regeneration by promoting cardiomyocyte dedifferentiation and proliferation. *Nat Cell Biol* **17**, 627-638 (2015), doi:10.1038/ncb3149.

Lim, S. *et al.* dNP2 is a blood-brain barrier-permeable peptide enabling ctCTLA-4 protein delivery to ameliorate experimental autoimmune encephalomyelitis. *Nat Commun* **6(8244)**, 1-13 (2015), doi:10.1038/ncomms9244.

Sun, S. *et al.* ALS-causative mutations in FUS/TLS confer gain and loss of function by altered association with SMN and U1-snRNP. *Nat Commun* **6(6171)**, 1-14 (2015), doi:10.1038/ncomms7171.

Lysosomes

Li, M. *et al.* Ubiquitin-dependent lysosomal membrane protein sorting and degradation. *Mol Cell* **57**, 467-478 (2015), doi:10.1016/j.molcel.2014.12.012.

Meiosis

Fennell, A. *et al.* Telomeres and centromeres have interchangeable roles in promoting meiotic spindle formation. *J Cell Biol* **208(4)**, 425-428 (2015), doi:10.1083/jcb.201409058.

Kim, J. *et al.* Meikin is a conserved regulator of meiosis-I-specific kinetochore function. *Nature* **517**, 466-471 (2015), doi:10.1038/nature14097.

Yang, H. *et al.* Nup132 modulates meiotic spindle attachment in fission yeast by regulating kinetochore assembly. *J Cell Biol* **211(2)**, 295-308 (2015), doi:10.1083/jcb.201501035.

Mitosis

Izawa, D. *et al.* The mitotic checkpoint complex binds a second CDC20 to inhibit active APC/C. *Nature* **517**, 631-634 (2015), doi:10.1038/nature13911.

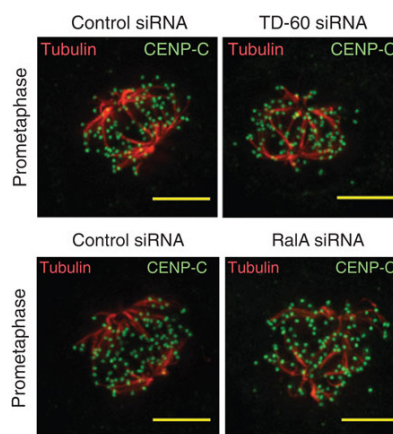
Chinen, T. *et al.* The γ -tubulin specific inhibitor gatastatin reveals temporal requirements of microtubule nucleation during the cell cycle. *Nat Commun* **6(8722)**, 1-11 (2015), doi:10.1038/ncomms9722.

Kamenz, J. *et al.* Robust ordering of anaphase events by adaptive thresholds and competing degradation pathways. *Mol Cell* **60**, 446-459 (2015), doi:10.1016/j.molcel.2015.09.022.

Liu, H. *et al.* Mitotic transcription installs Sgo1 at centromeres to coordinate chromosome segregation. *Mol Cell* **59**, 426-436 (2015), doi:10.1016/j.molcel.2015.06.018.

Nielsen, C. *et al.* PICH promotes sister chromatid disjunction and co-operates with topoisomerase II in mitosis. *Nat Commun* **6(8962)**, 1-15 (2015), doi:10.1038/ncomms9962.

Papini, D. *et al.* TD-60 links RalA GTPase function to the CPC in mitosis. *Nat Commun* **6(7678)**, 1-12 (2015), doi:10.1038/ncomms8678.



Title: TD-60 links RalA GTPase function to the CPC in mitosis

Authors: D. Papini, L. Langemeyer, M. Abad, A. Kerr, I. Samejima, P. Eyers, A. Jeyaprakash, J. Higgins, F. Barr, W. Earnshaw

Source: <http://www.nature.com/ncomms/2015/150709/ncomms8678/full/ncomms8678.html>

Modification: Cropped

License: <http://creativecommons.org/licenses/by/4.0/>

Rocuzzo, M. *et al.* FEAR-mediated activation of Cdc14 is the limiting step for spindle elongation and anaphase progression. *Nat Cell Biol* **17**, 251-261 (2015), doi:10.1038/ncb3105.

Seybold, C. *et al.* Kar1 binding to Sfi1 C-terminal regions anchors the SPB bridge to the nuclear envelope. *J Cell Biol* **209(6)**, 843-861 (2015), doi:10.1083/jcb.201412050.

Vleugel, M. *et al.* Sequential multisite phosphor-regulation of KNL1-BUB3 interfaces at mitotic kinetochores. *Mol Cell* **57**, 824-835 (2015), doi:10.1016/j.molcel.2014.12.036.

Whalley, H. *et al.* Cdk1 phosphorylates the Rac activator Tiam1 to activate centrosomal Pak and promote mitotic spindle formation. *Nat Commun* **6(7437)**, 1-15 (2015), doi:10.1038/ncomms8437.

Tauchman, E. *et al.* Stable kinetochore-microtubule attachment is sufficient to silence the spindle assembly checkpoint in human cells. *Nat Commun* **6(10036)**, 1-9 (2015), doi:10.1038/ncomms10036.

Yukawa, M. *et al.* The Msd1-Wdr8-Pkl1 complex anchors microtubule minus ends to fission yeast spindle pole bodies. *J Cell Biol* **209(4)**, 549-562, (2015), doi:10.1083/jcb.201412111.

Zhuo, X. *et al.* Usp16 regulates kinetochore localization of Plk1 to promote proper chromosome alignment in mitosis. *J Cell Biol* **210(5)**, 727-735 (2015), doi:10.1083/jcb.201502044.

Zhang, G. *et al.* Distinct domains in Bub1 localize RZZ and BubR1 to kinetochores to regulate the checkpoint. *Nat Commun* **6(7162)**, 1-14 (2015), doi:10.1038/ncomms8162.

Tollenaere, M. *et al.* p38- and MK2-dependent signaling promotes stress-induced centriolar satellite remodeling via 14-3-3-dependent sequestration of CEP131/AZI1. *Nat Commun* **6(10075)**, 1-12 (2015), doi:10.1038/ncomms10075.

Kim, S. *et al.* Multiple assembly mechanisms anchor the KMN spindle checkpoint platform at human mitotic kinetochores. *J Cell Biol* **208(2)**, 181-196, (2015), doi:10.1083/jcb.201407074.

Etemad, B. *et al.* Kinetochore-microtubule attachment is sufficient to satisfy the human spindle assembly checkpoint. *Nat Commun* **6(8987)**, 1-8 (2015), doi:10.1038/ncomms9987.

Kalantzaki, M. *et al.* Kinetochore-microtubule error correction is driven by differentially regulated interaction modes. *Nat Cell Biol* **17**, 421-433 (2015), doi:10.1038/ncb3128.

McKinley, K. *et al.* The CENP-L-N complex forms a critical node in an integrated meshwork of interactions at the centromere kinetochore interface. *Mol Cell* **60**, 886-896 (2015), doi:10.1016/j.molcel.2015.10.027.

Kim, T. *et al.* Kinetochore-localized BUB1 /BUB-3 complex promotes anaphase onset in *C. elegans*. *J Cell Biol* **209(4)**, 507-517 (2015), doi:10.1083/jcb.201412035.

Magidson, V. *et al.* Adaptive changes in the kinetochore architecture facilitate proper spindle assembly. *Nat Cell Biol* **17**, 1134-1144 (2015), doi:10.1038/ncb3223.

mRNA and RNA-binding proteins

Lin, Y. *et al.* Formation and maturation of phase-separated liquid droplets by RNA-binding proteins. *Mol Cell* **60**, 208-219 (2015), doi:10.1016/j.molcel.2015.08.018.

Smith, C. *et al.* *In vivo* single-particle imaging of nuclear mRNA export in budding yeast demonstrates an essential role for Mex67p. *J Cell Biol* **211(6)**, 1121-1130 (2015), doi:10.1083/jcb.201503135.

Trcek, T. *et al.* *Drosophila* germ granules are structured and contain homotypic mRNA clusters. *Nat Commun* **6(7962)**, 1-12 (2015), doi:10.1038/ncomms8962.

Neurobiology

Mignogna, M. *et al.* The intellectual disability protein RAB39B selectively regulates GluA2 trafficking to determine synaptic AMPAR composition. *Nat Commun* **6(6504)**, 1-15 (2015), doi:10.1038/ncomms7504.

Parasitology

Mbengue, A. *et al.* A molecular mechanism of artemisinin resistance in *Plasmodium falciparum* malaria. *Nature* **520**, 683-687 (2015), doi:10.1038/nature14412.

Peroxisomes

Knoops, K. *et al.* Yeast *pex1* cells contain peroxisomal ghosts that import matrix proteins upon reintroduction of Pex1. *J Cell Biol* **211(5)**, 955-962 (2015), doi:10.1083/jcb.201506059.

Zhang, J. *et al.* ATM functions at the peroxisome to induce pexophagy in response to ROS. *Nat Cell Biol* **17**, 1259-1269 (2015), doi:10.1038/ncb3230.

Protozoan

Vinayak, S. *et al.* Genetic modification of the diarrhoeal pathogen *Cryptosporidium parvum*. *Nature* **523**, 477-480 (2015), doi:10.1038/nature14651.

Quality control

Baker, R. *et al.* Cytosolic extensions directly regulate a rhomboid protease by modulating substrate gating. *Nature* **523**, 101-105 (2015), doi:10.1038/nature14357.

Gallina, I. *et al.* Cmr1/WDR76 defines a nuclear genotoxic stress body linking genome integrity and protein quality control. *Nat Commun* **6(6533)**, 1-16 (2015), doi:10.1038/ncomms7533.

Vacuoles

Liu, X. *et al.* ESCRTs cooperate with a selective autophagy receptor to mediate vacuolar targeting of soluble cargos. *Mol Cell* **59**, 1035-1042 (2015), doi:10.1016/j.molcel.2015.07.034.

www.gelifesciences.com/deltavision

GE, GE monogram, and DeltaVision are trademarks of General Electric Company.

© 2016 General Electric Company. First published May 2016

All goods and services are sold subject to the terms and conditions of sale of the company within GE Healthcare which supplies them.

A copy of these terms and conditions is available on request. Contact your local GE Healthcare representative for the most current information.

GE Healthcare Bio-Sciences AB, Björkgatan 30, 751 84 Uppsala, Sweden

GE Healthcare Europe GmbH, Munzinger Strasse 5, D-79111 Freiburg, Germany

GE Healthcare Bio-Sciences Corp., 100 Results Way, Marlborough, MA 01752, USA

GE Healthcare Dharmacon Inc., 2650 Crescent Dr, Lafayette, CO 80026, USA

HyClone Laboratories Inc., 925 W 1800 S, Logan, UT 84321, USA

GE Healthcare Japan Corp., Sanken Bldg., 3-25-1, Hyakunincho Shinjuku-ku, Tokyo 169-0073, Japan

For local office contact information, visit www.gelifesciences.com/contact

29208627 AA 05/2016

GE Healthcare UK Ltd.
Amersham Place
Little Chalfont
Buckinghamshire
HP7 9NA, UK